

Restoring Windows using a Windows Vista or Windows 7 32-bit installation DVD.

Introduction

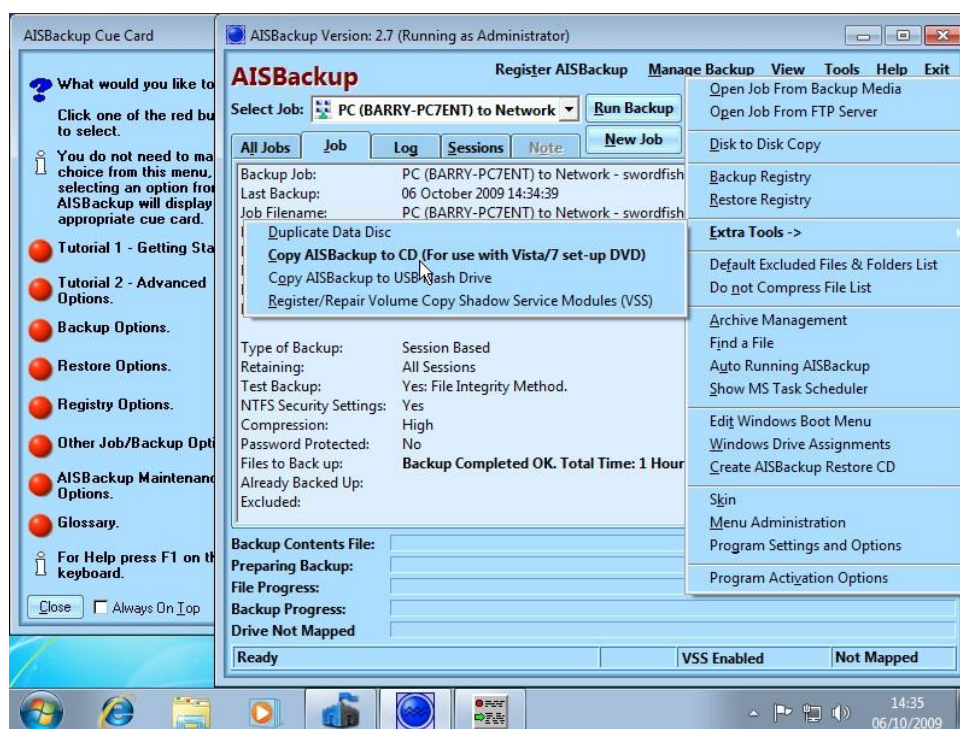
A 32-bit version of the Windows Vista or Windows 7 installation DVD may be used to restore the following operating systems':

- Windows 2000 and Windows Server 2000.
- 32-bit and 64-bit Windows XP and Windows Server 2003.
- 32-bit and 64-bit Windows Vista, Windows Server 2008 and Windows 7.

Constraints

- You must use the 32-bit version of the set-up DVD; the 64-bit version of the set-up DVD will not work. If you cannot acquire a 32-bit version of the set-up DVD then consider making an AISBackup restore CD instead.
- A minimum of 500 MB RAM is required on the PC to be restored.
- The PC must support the installation of Windows Vista or Windows 7 using a bootable DVD.
- AISBackup must be made available on CD, DVD, External drive or USB flash drive by using the **Tools / Extra Tools / Copy AISBackup to CD** or the **Tools / Extra Tools / Copy** menu option.

Prepare for disaster recovery



To prepare for disaster recovery make a copy of AISBackup to CD by using the **Tools / Extra Tools / Copy AISBackup to CD (for use with Vista/7 set-up DVD)**. Alternatively a copy of AISBackup may be made to USB flash drive or the backup external drive by using **Tools / Extra Tools / Copy AISBackup to USB Flash Drive**.

Instructions

The objective when using the Windows set-up DVD is to use the system options recovery tool's command prompt option to enable a copy of AISBackup to be started. The set-up DVD automatically attempts to identify and repair Windows problems, these options must be skipped or cancelled as shown in the next few pages.

Boot the PC using the Windows Vista or Windows 7 installation DVD.

Once the PC has booted the Windows set-up DVD may be removed from the drive making it possible to restore a backup that was made to CD or DVD.

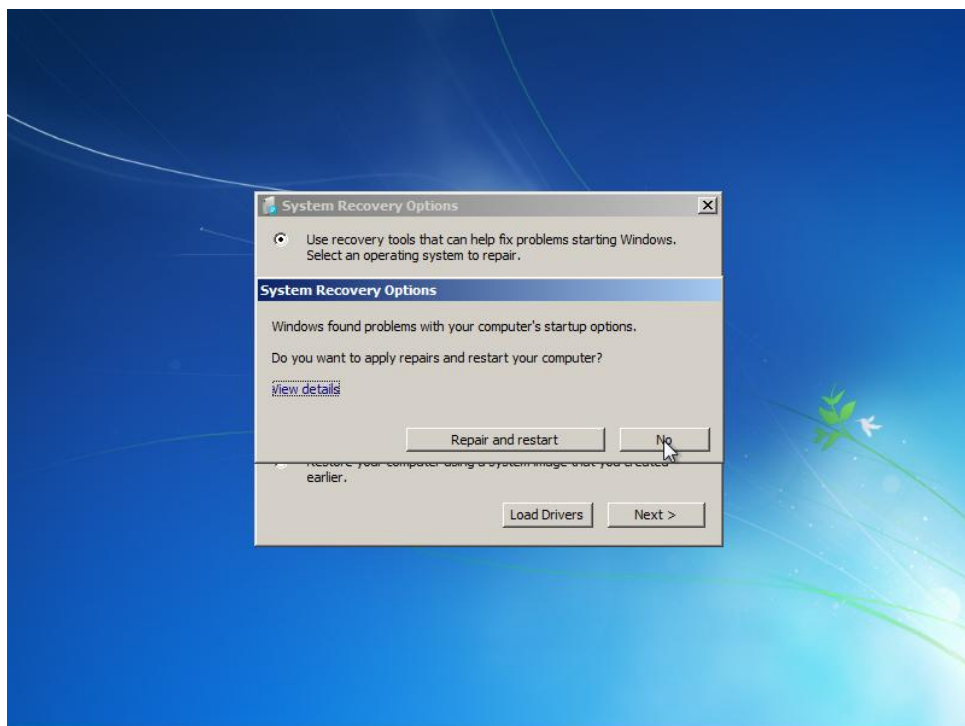


Choose the language option and keyboard then click **Next**.



Select the **Repair your computer** option.

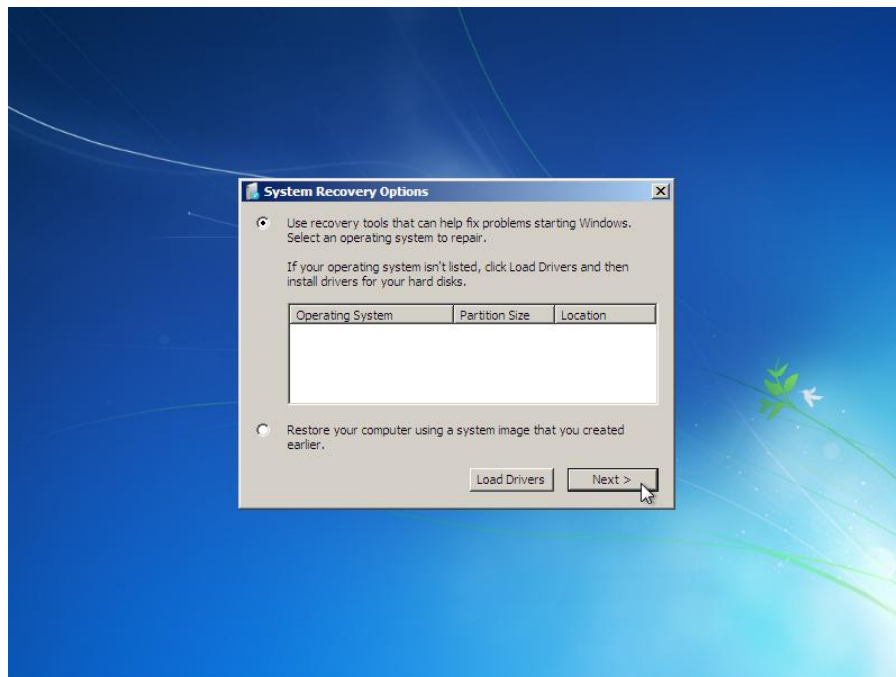
Set-up DVD Scan for Windows and detection of boot problems.



The first *Repair you computer* action is to scan the local disks for Windows operating systems and to determine if there is an error in the boot procedure. If you PC contains a hidden recovery partition (and most OEM computers do) the *Repair and Restart* form will be displayed, click **No** to skip the repair.

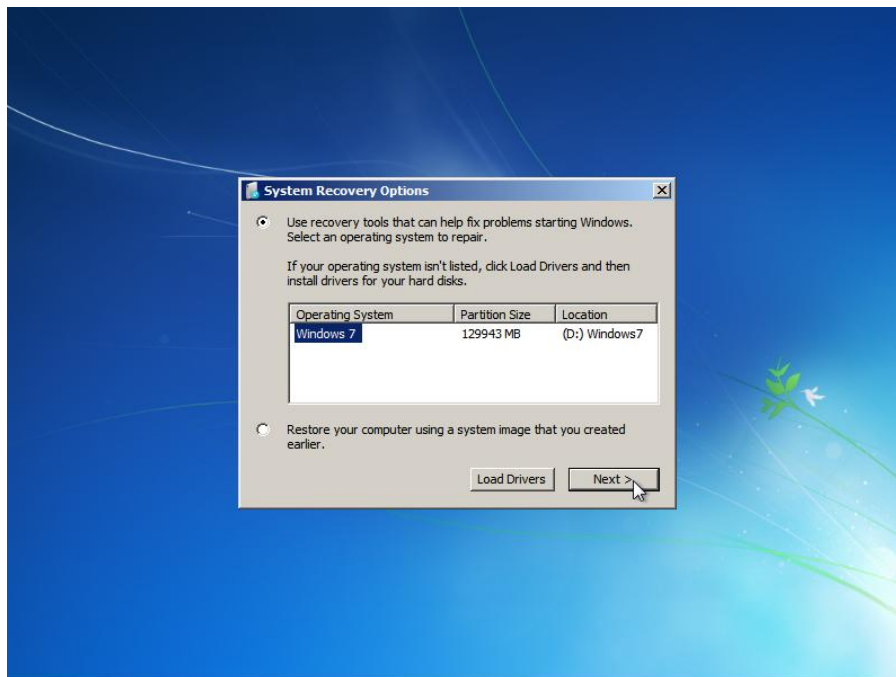
System Recovery Options

The next action depends on the status of the disk you are restoring to. If the disk is blank or unformatted the following System Recovery Option is displayed:



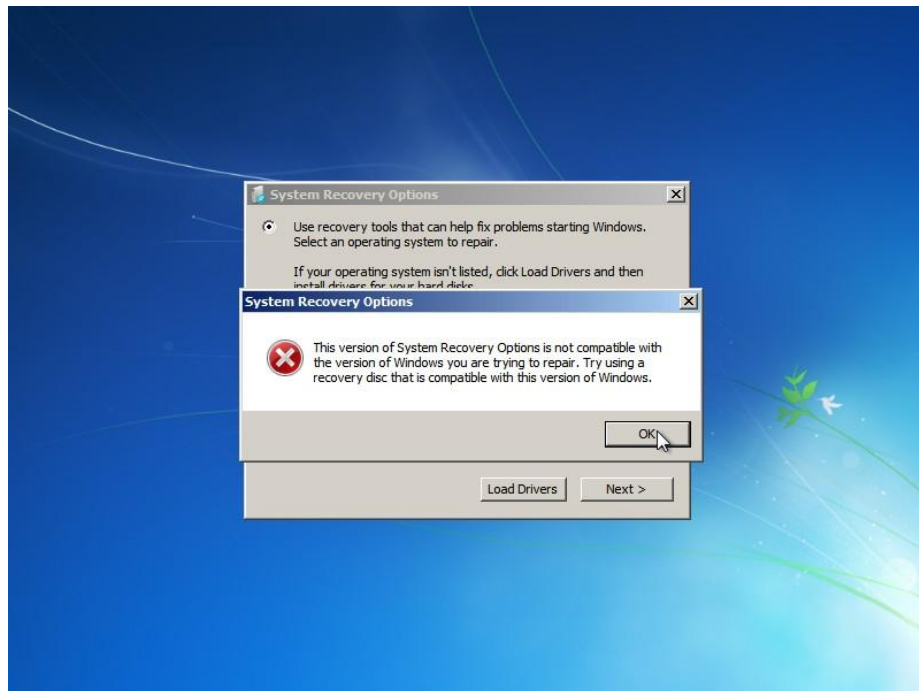
Select the **Use recovery tools that can help fix problems starting Windows ...** then click **Next**.

If you are restoring a 32-bit version of Windows the operating system will be pre selected, as shown below

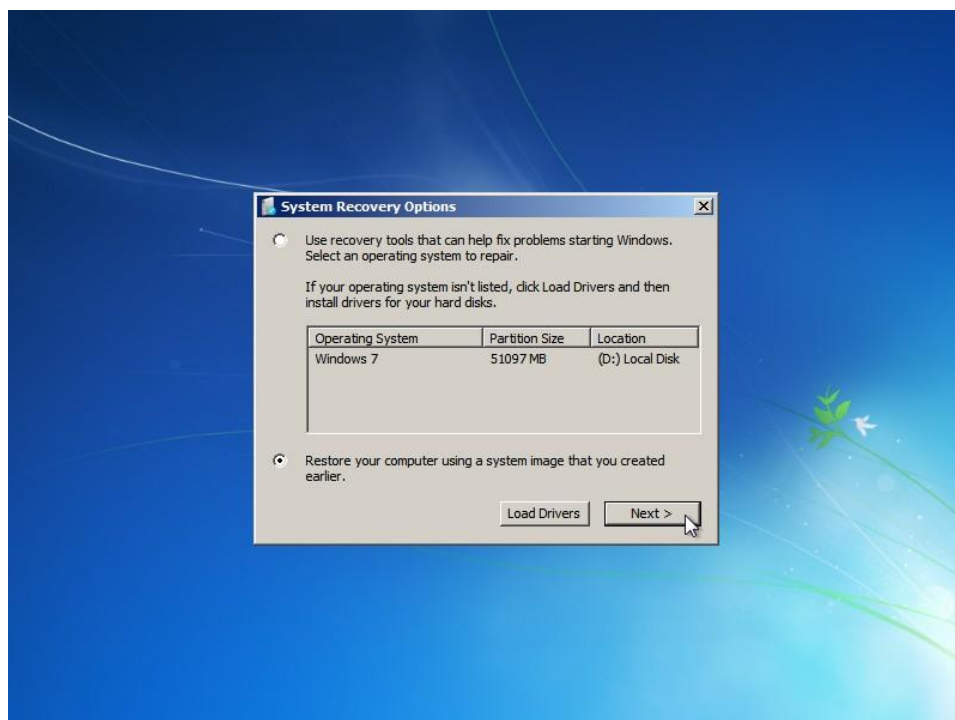


Select the **Use recovery tools that can help fix problems starting Windows ...** then click **Next**.

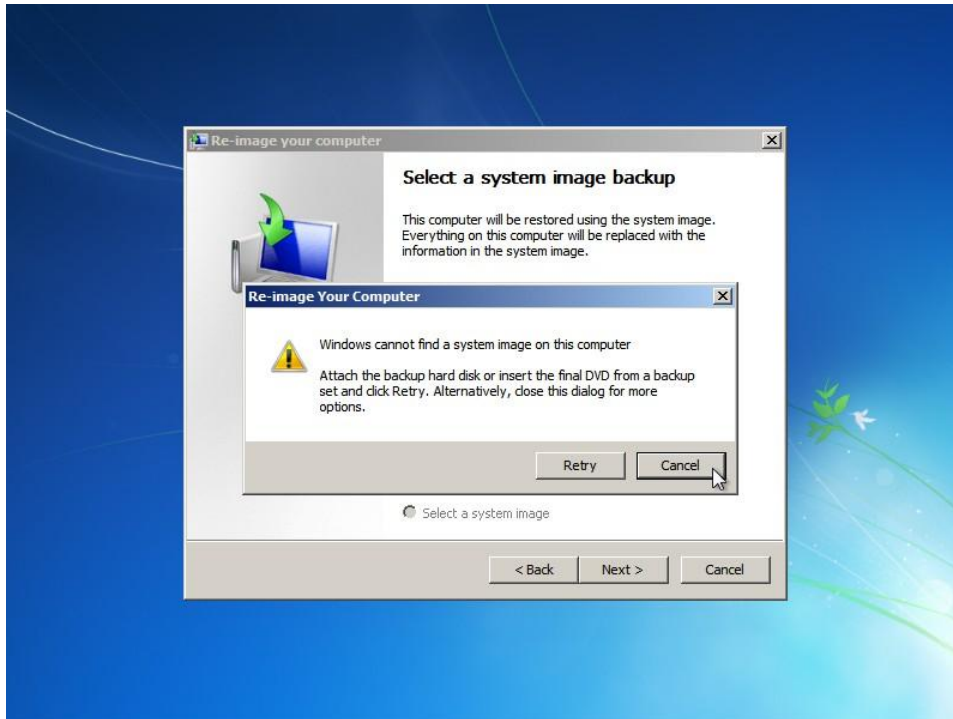
64-Bit Restore: If you are restoring a 64-bit version of Windows the following procedure must be used:



Dismiss the warning screen by clicking **OK**.

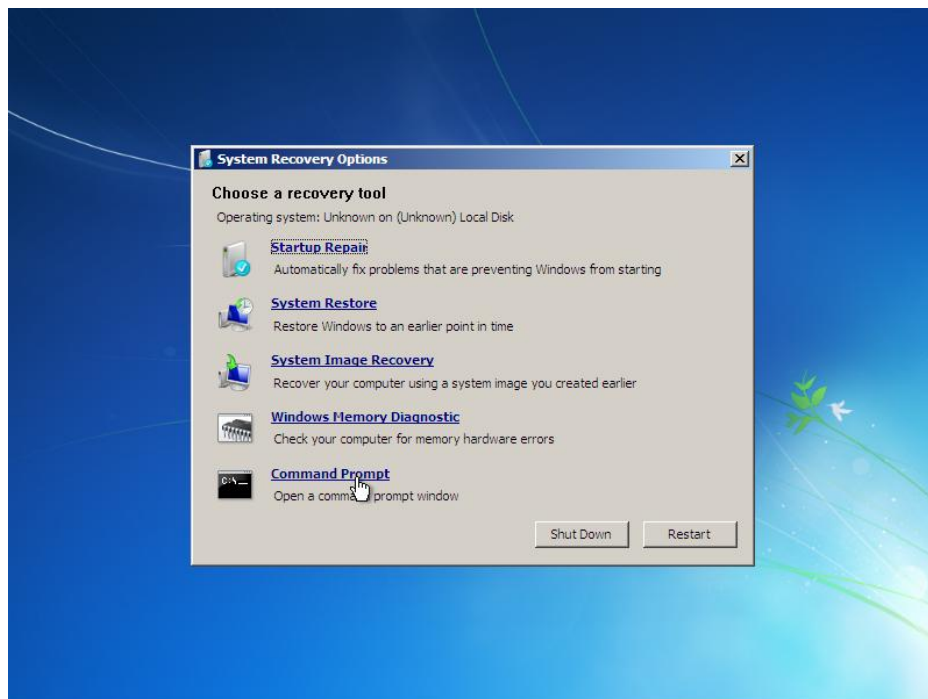


On the System Recovery Options screen select *Restore your computer using a system image that you created earlier* the click **Next**. Note that we are not actually going to use this option.



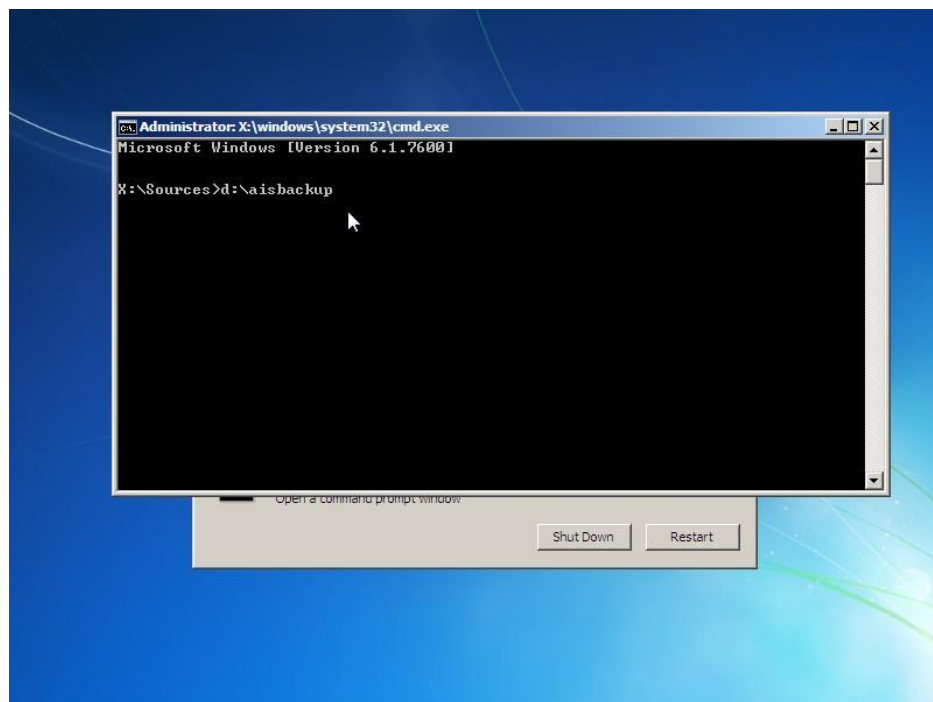
On the *Select a system image backup* form click **Cancel**, the recovery tools form will then be displayed, as shown on the next page.

System Recovery Options: Recovery Tools.

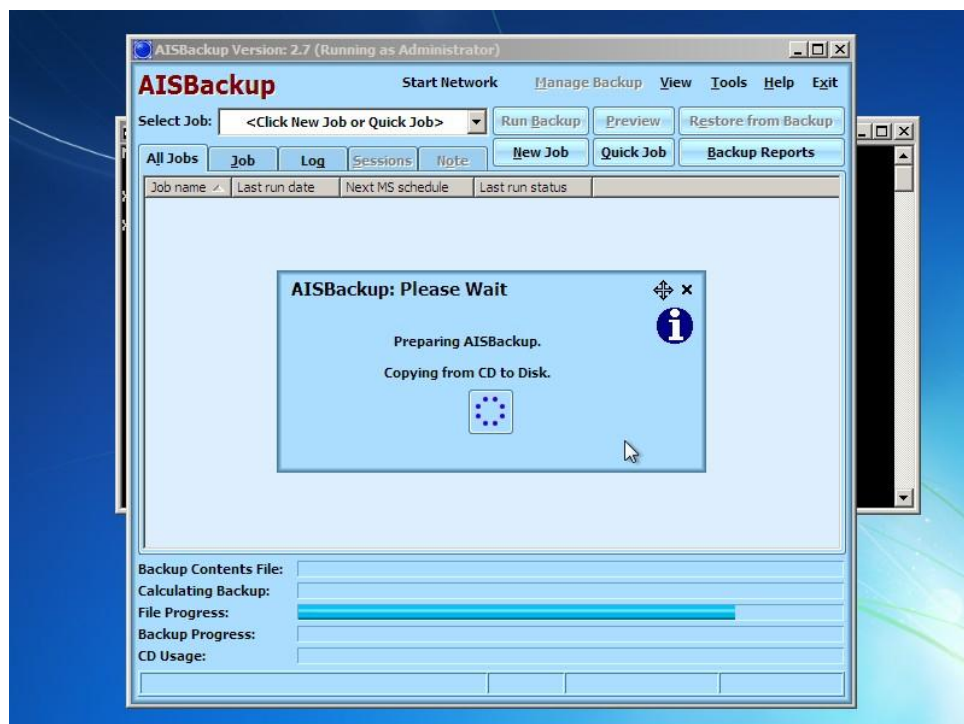


Ensure that AISBackup is made available either by plugging in a copy of AISBackup on a USB flash drive, external drive or swap the Windows set-up DVD with a copy of AISBackup on CD.

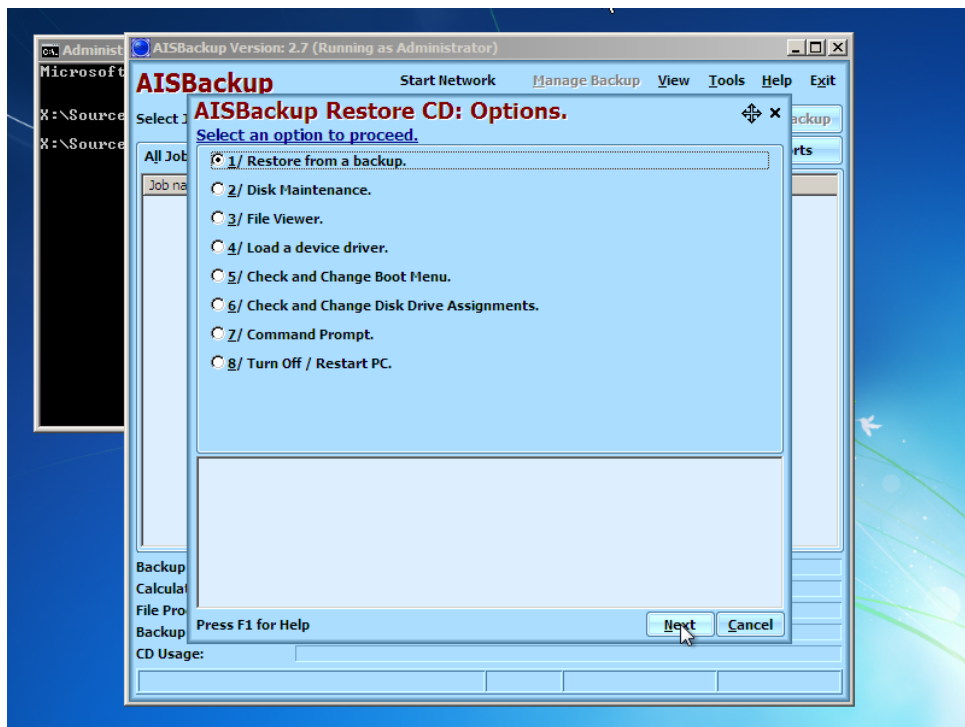
Select the **Command Prompt** option.



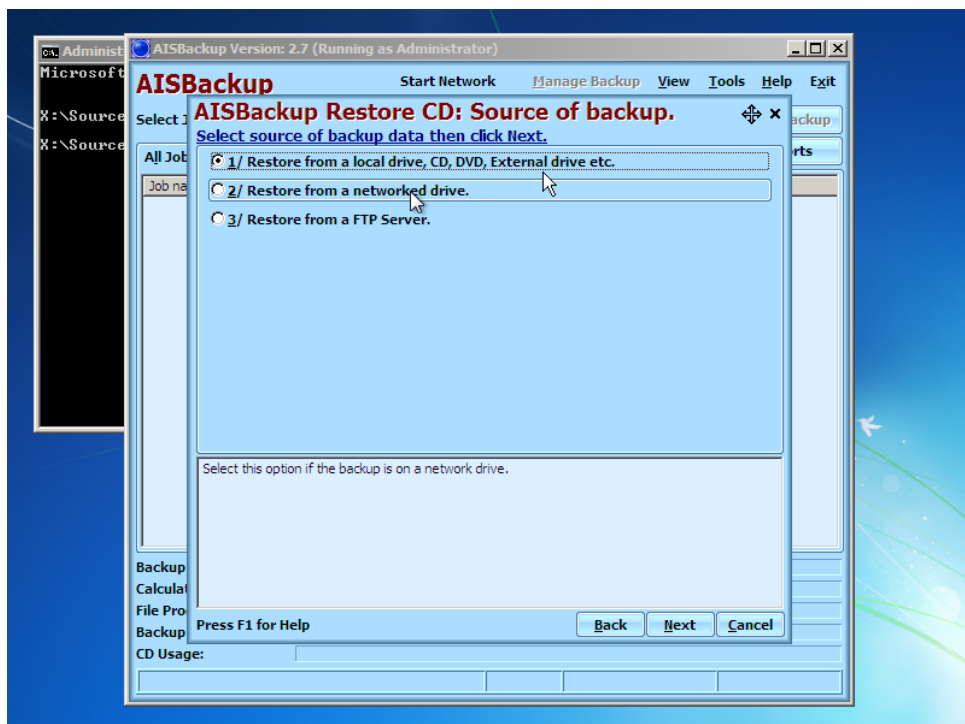
Start AISBackup by typing *[Drive]:\aisbackup*, where [Drive] is usually *D:*, examples: *d:\aisbackup*, *e:\aisbackup*; you may have to try several drive letters depending on the location of AISBackup.



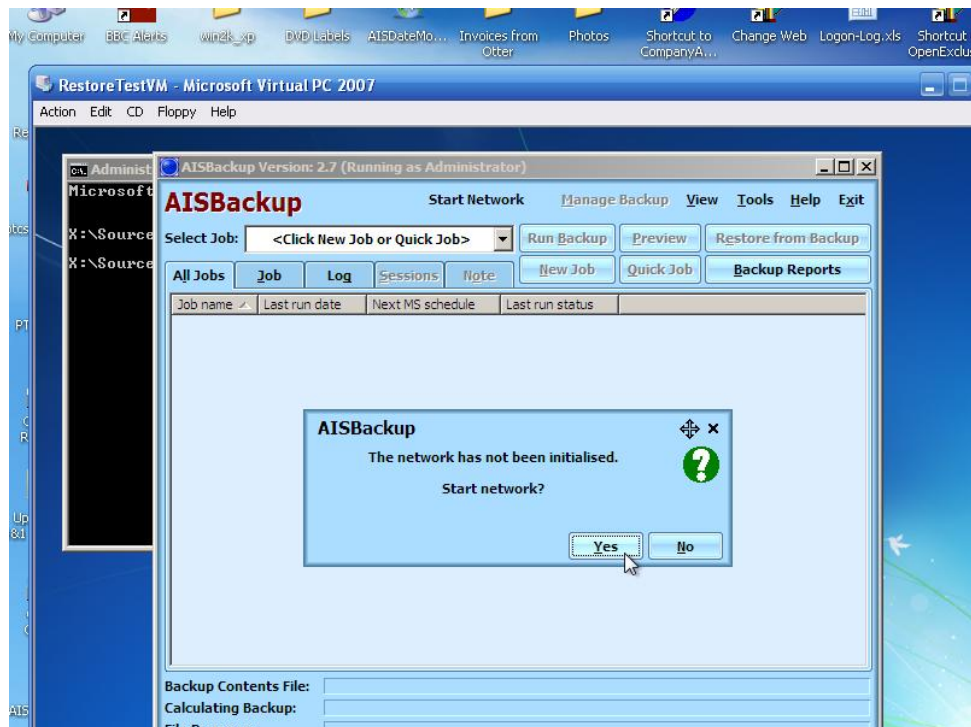
If AISBackup is started from a DVD it is copied to disk to enable the CD/DVD drive to be used for restoring disc based backups.



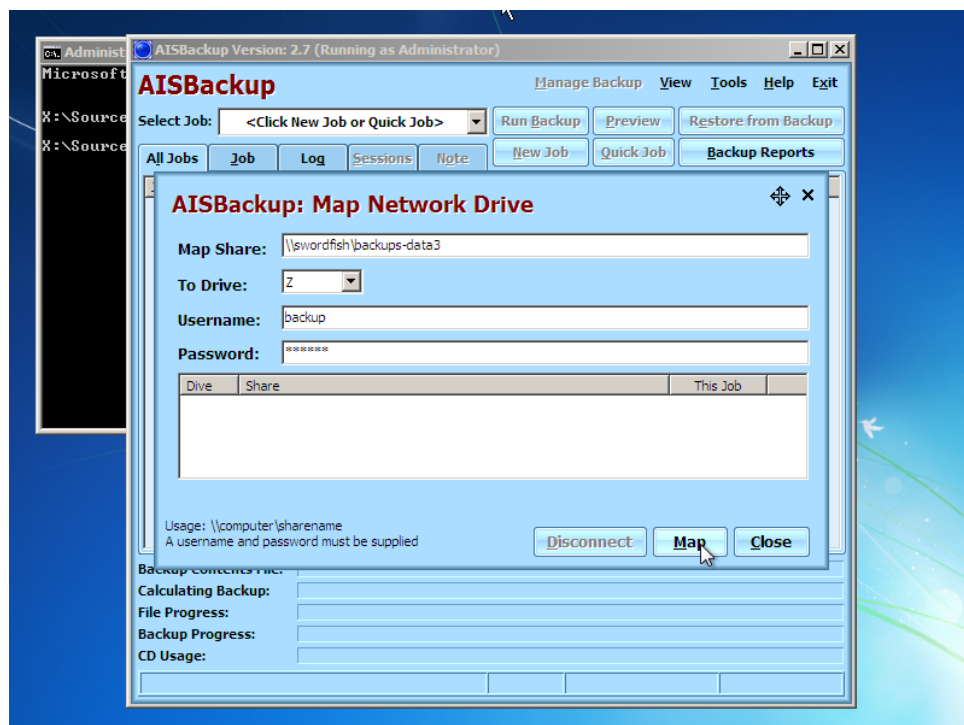
Choose **Restore from a backup.**



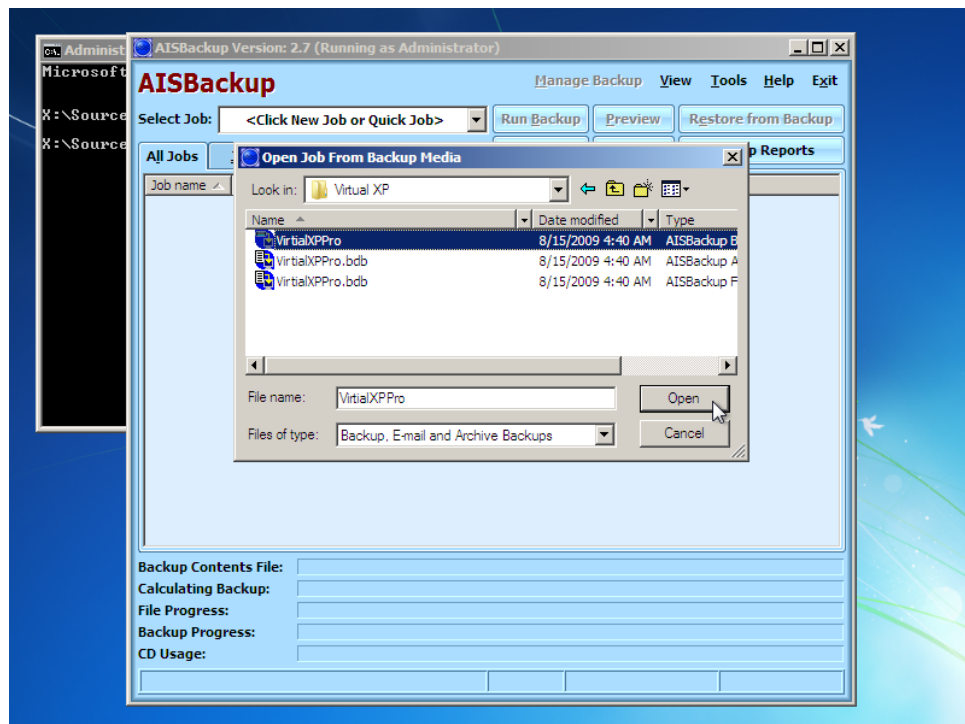
Choose the restore option depending on the location of the backup, e.g. local drive or network options. In this example we are using **Restore from a network drive.**



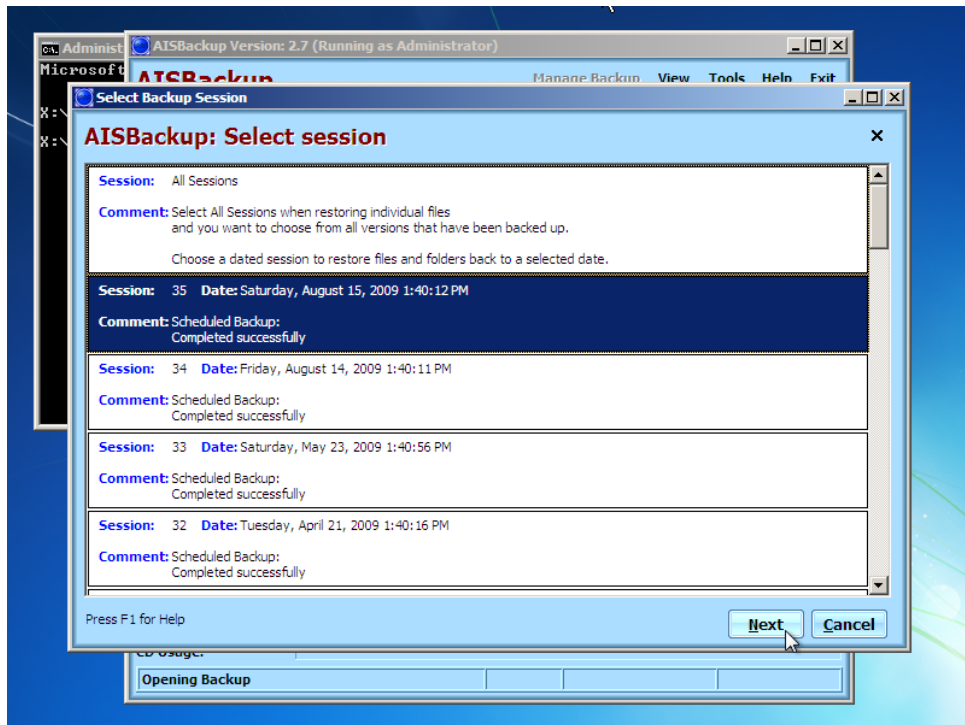
The first time the network is used it must be initialised, this may take a few minutes. If the network is not available you may have to install the appropriate device drives, see page xxx



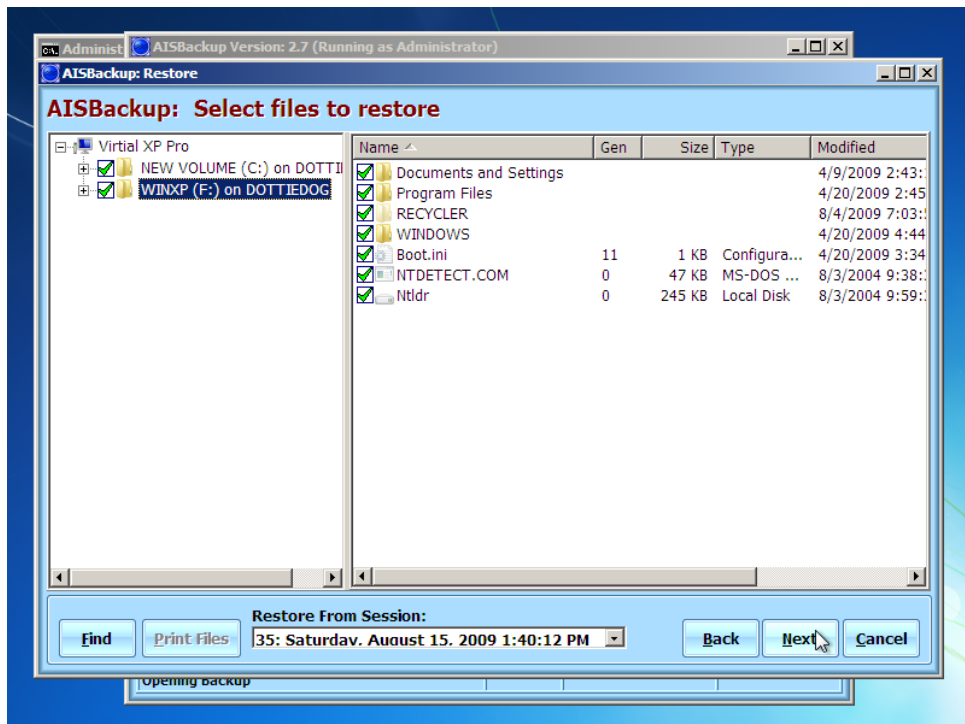
Type the name of the network share and the username and password of an authorised account, then click **Map**.



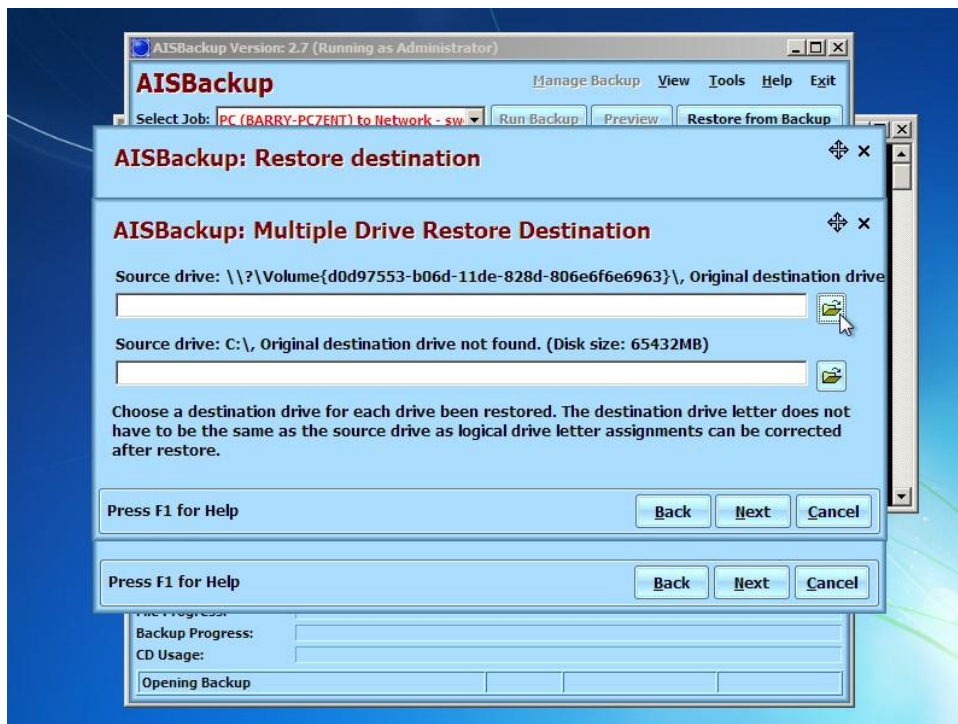
Select and **Open** the backup job using the *Open Job From Backup Media* form.




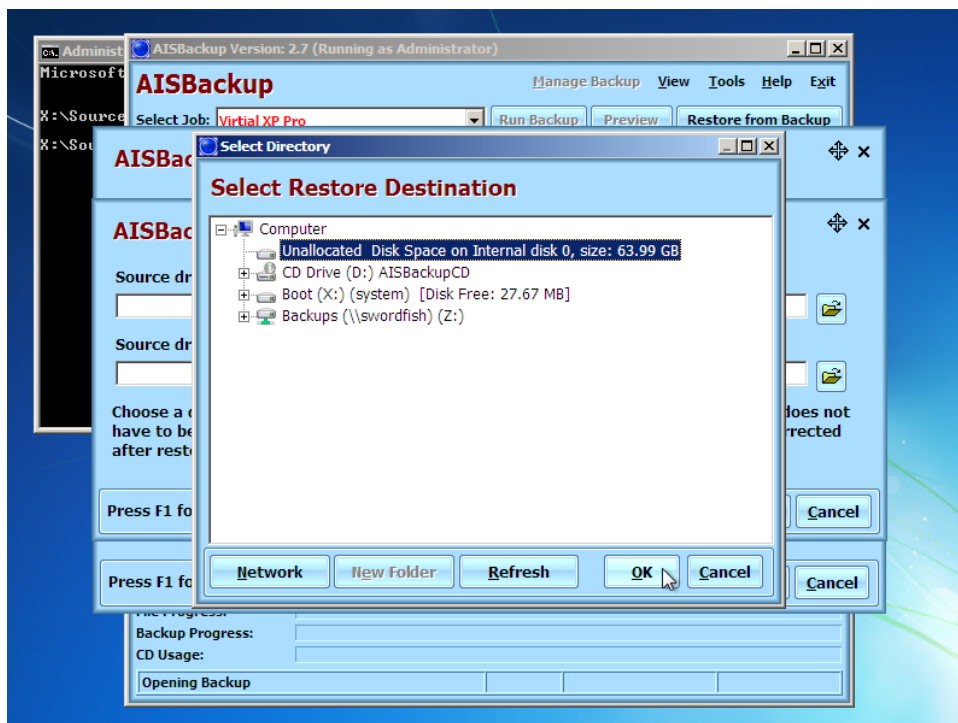
Select the dated session to be restored, do not select *All Sessions* for disaster recovery, and then click **Next**.



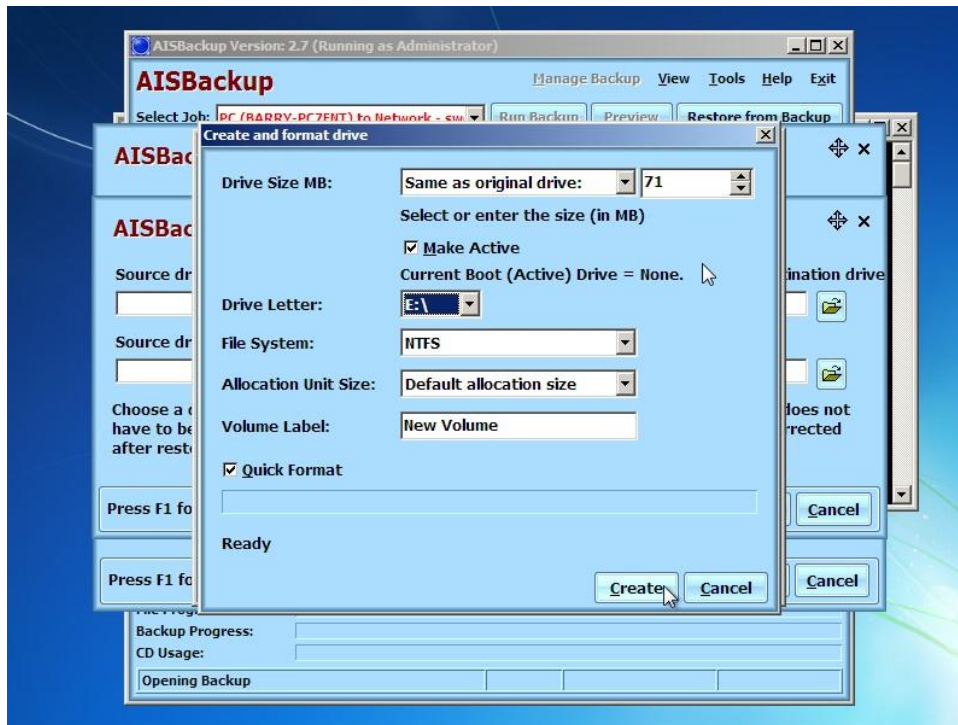
Select the drives you wish to restore, for Windows 7 this is usually two drives where one drive holds the boot files and the second drive holds the copy of Windows 7 and your data. After selecting the drives click **Next**.



In this example we are restoring to a brand new unformatted. Click the  button to open the restore destination dialogue. If the original disk drives are present on the PC AISBackup automatically selects them as the default destination, the automatic selection can, of course, be changed.



Select the *Unallocated Disk Space* option, and then click **OK**.



If the original disk size is known to AISBackup* it is set as the default for the *Create and format disk* dialogue. Other options include 50% disk size or remaining disk space, or the disk size may be entered manually. Note in this example of restoring Windows 7 the boot files only occupy a 71MB disk and Windows several gigabytes; it would be a waste of disk space to allocate more than 71MB to the boot files, however you may want to allocate the remaining unallocated disk space for the Windows partition.

The drive letters at this stage are logical and it does not matter that the boot partition that did not have an original drive letter and Windows that was allocated drive C:\ are restored to different drive letters, when the restored Windows is booted the drive letters will be back to normal. In this example we are assigning drive letter E:\ to the boot files restore.

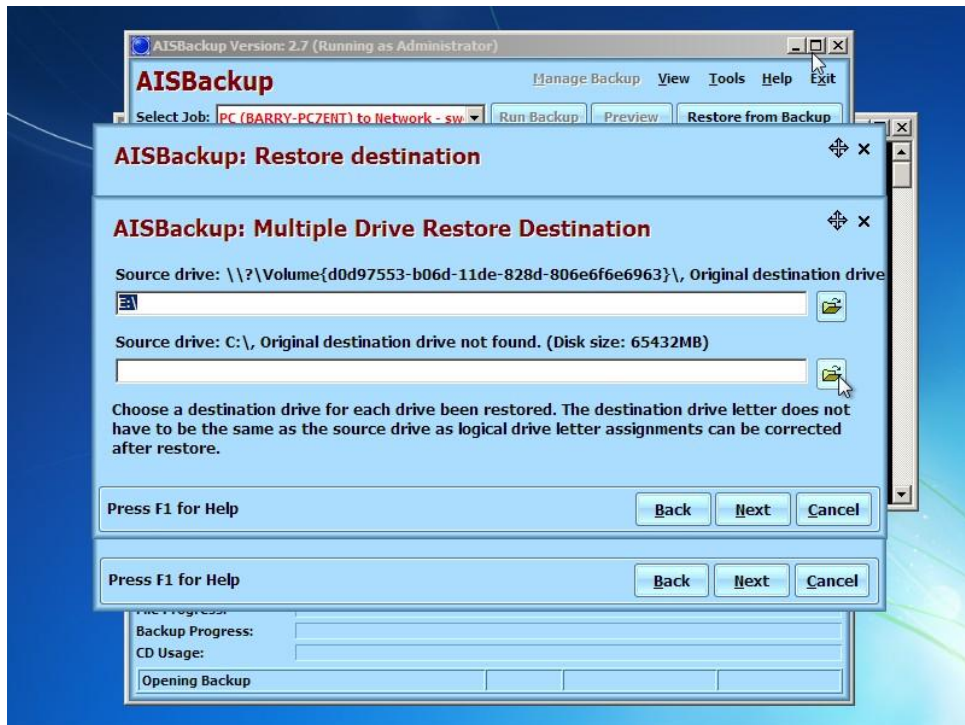
Important


The boot files must also be restored to a Primary / Active drive or the PC will not boot, to set this option check the option **Make Active**.

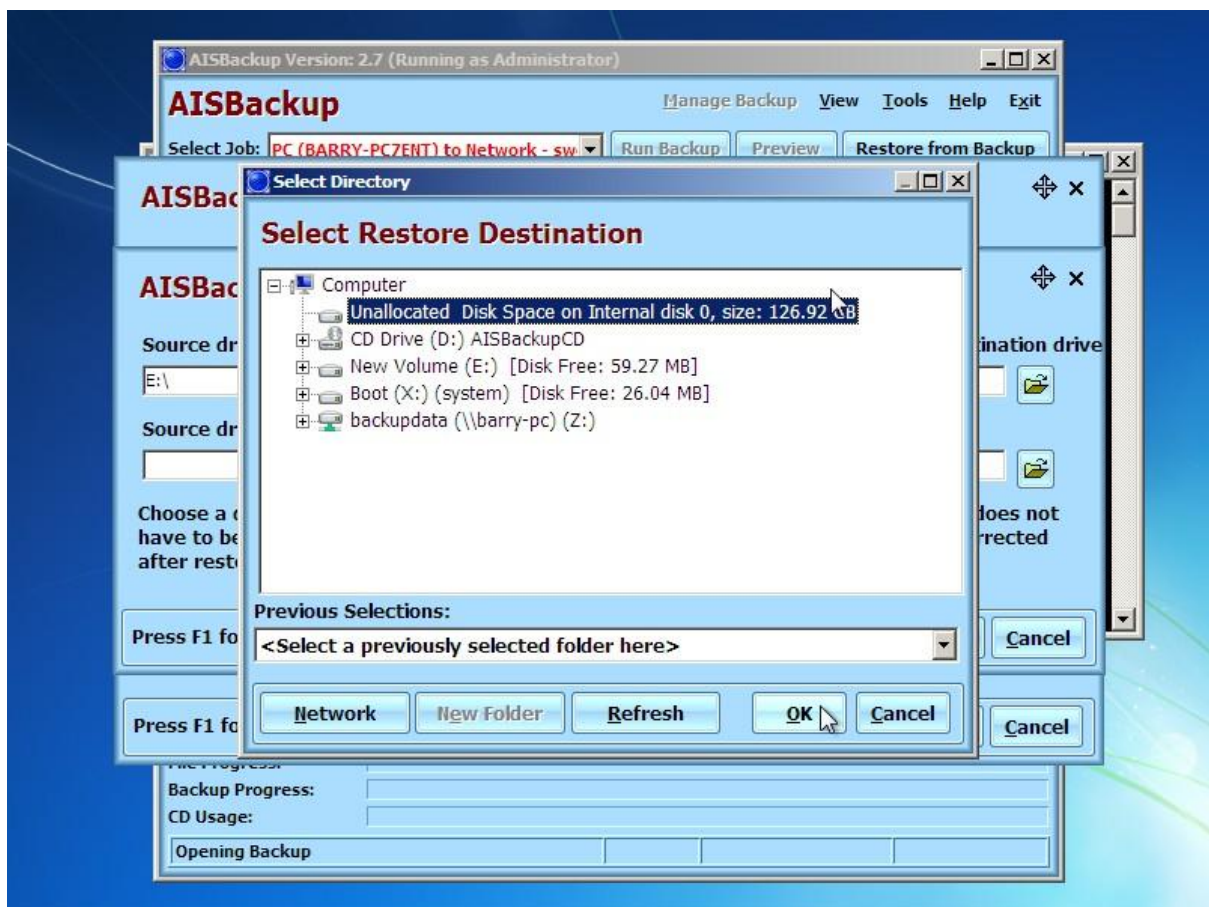
Once the disk parameters have been set click **Create**.

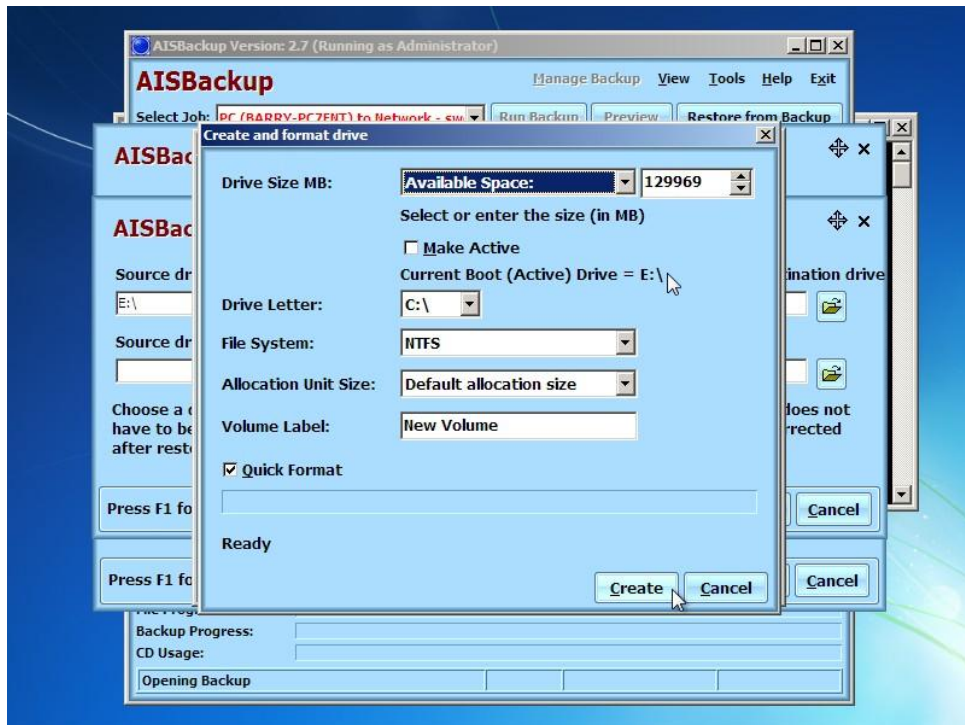
Notes:

* The original disk size was only stored in AISBackup from build 2.7 (348) and for disk drives without a logical drive letter from build 2.7 (359).

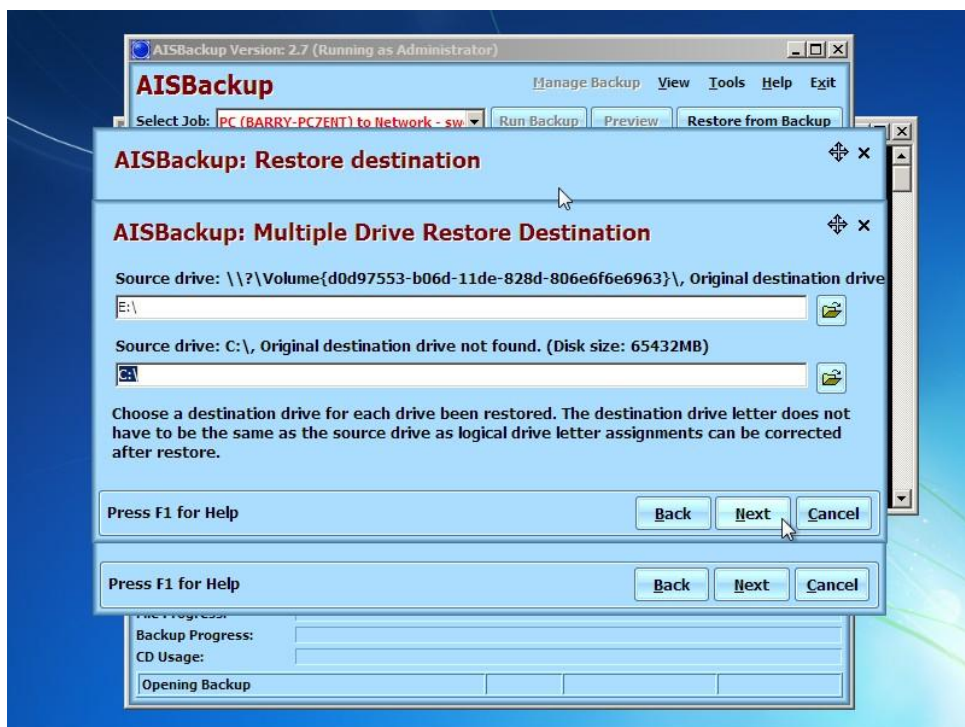


In this example we are restoring the Windows C:\ drive to a brand new unformatted disk. Click the second  button to open the restore destination dialogue.

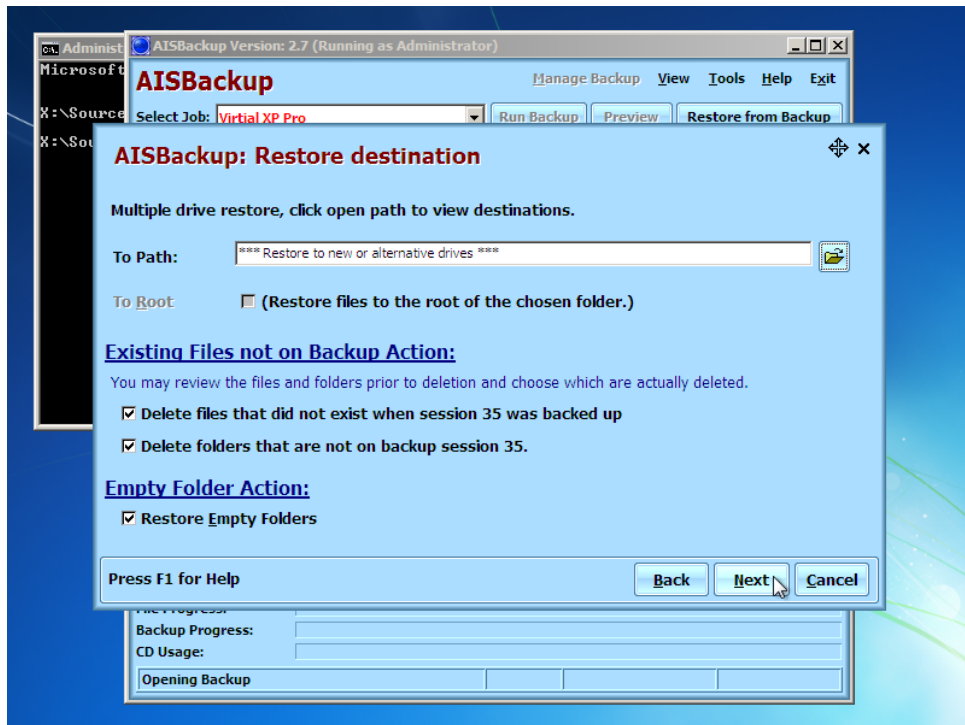




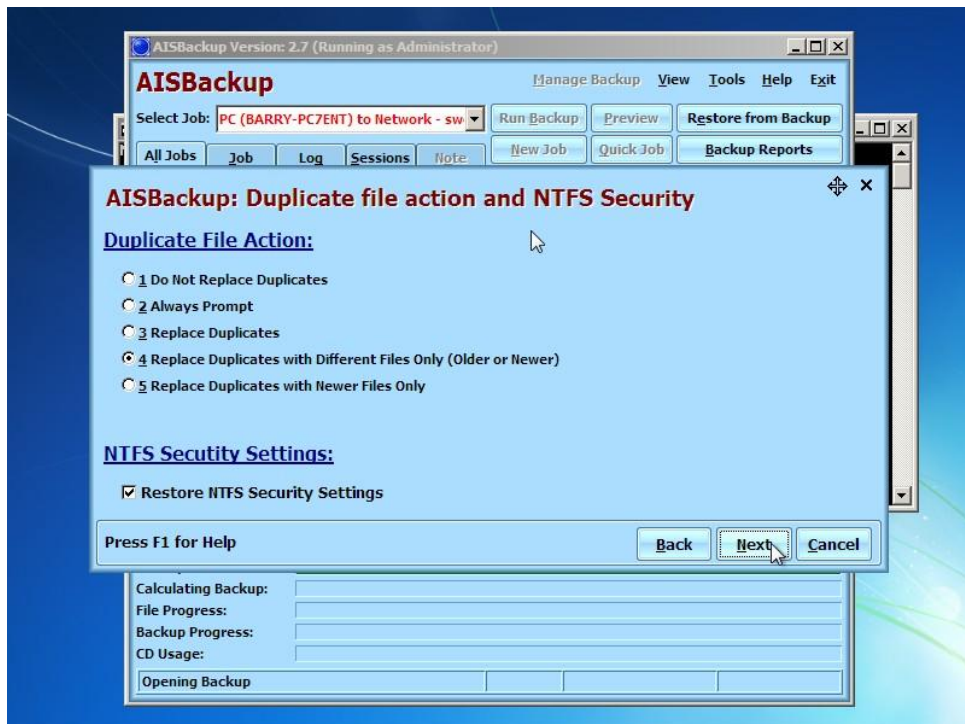
For the Windows disk the remainder of the disk space may be selected for restore, the Volume name may also be changed from *New Volume*, e.g. *Windows7*. Click **Create** to continue.



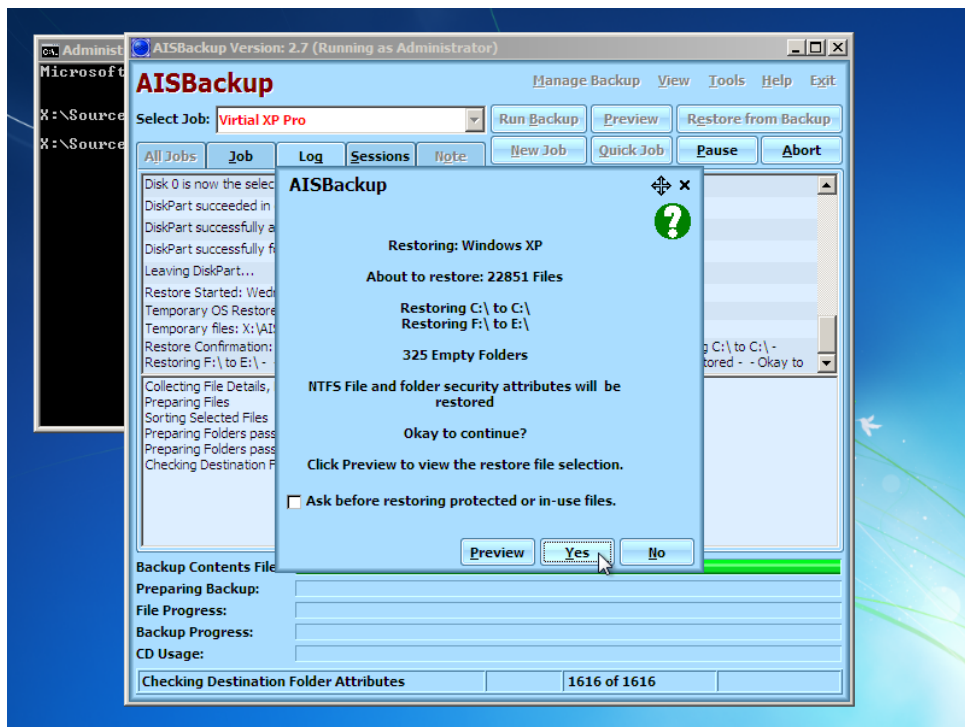
The destination drives have been selected, click **Next**.



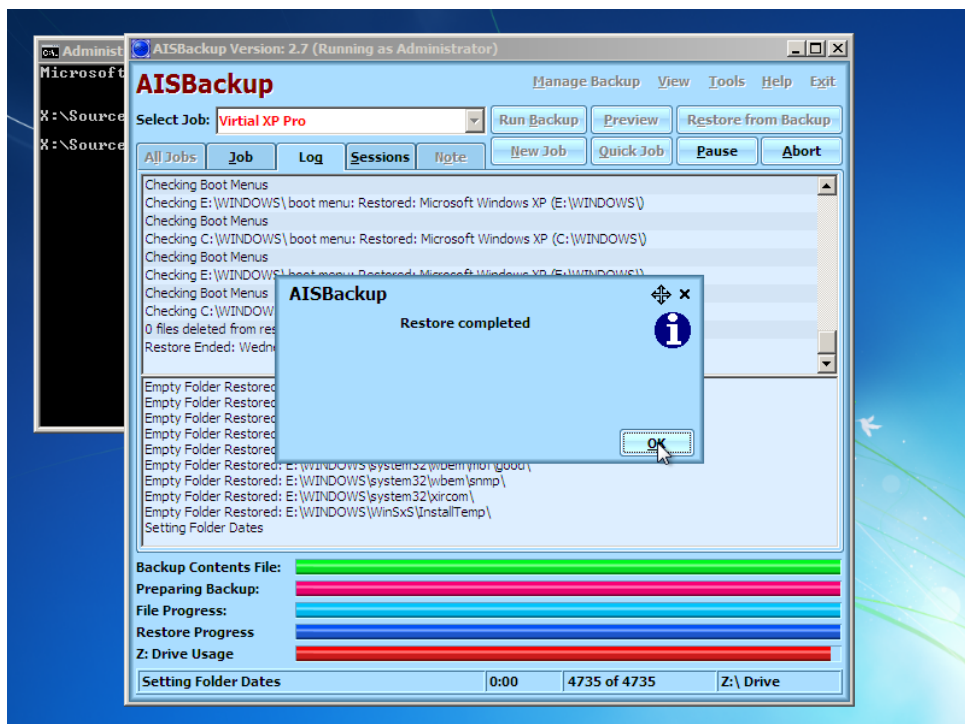
The restore destination form has been completed, see AISBackup help for details of the remaining options.



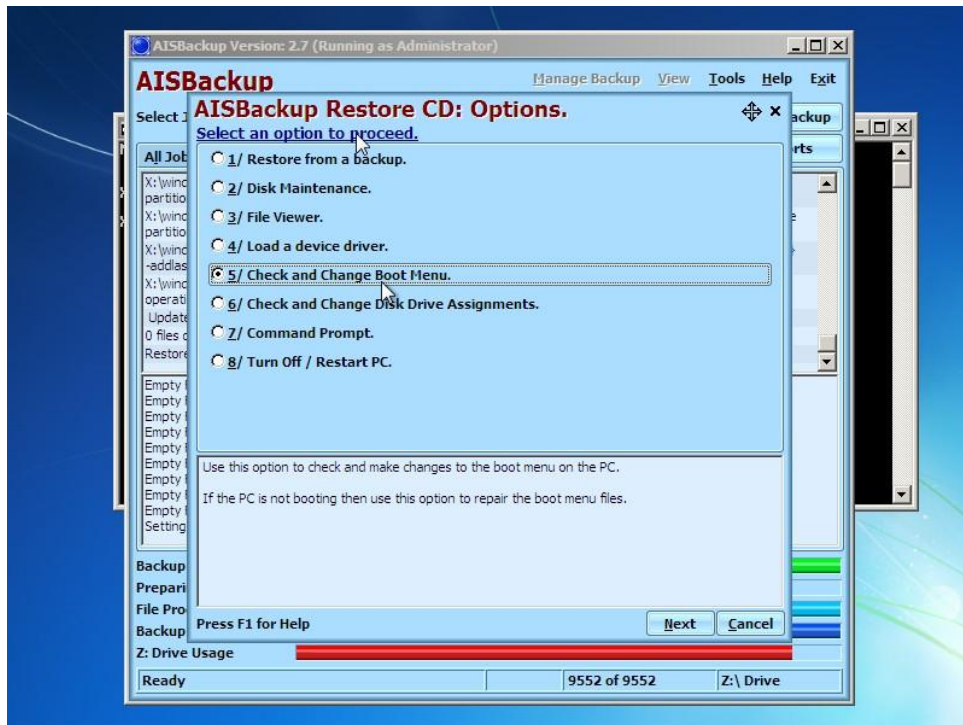
If the *Duplicate file action and NTFS security settings* form is displayed click **Next**. It is highly recommended that NTFS security settings are restored when making a disaster recovery or new disk installation restore.



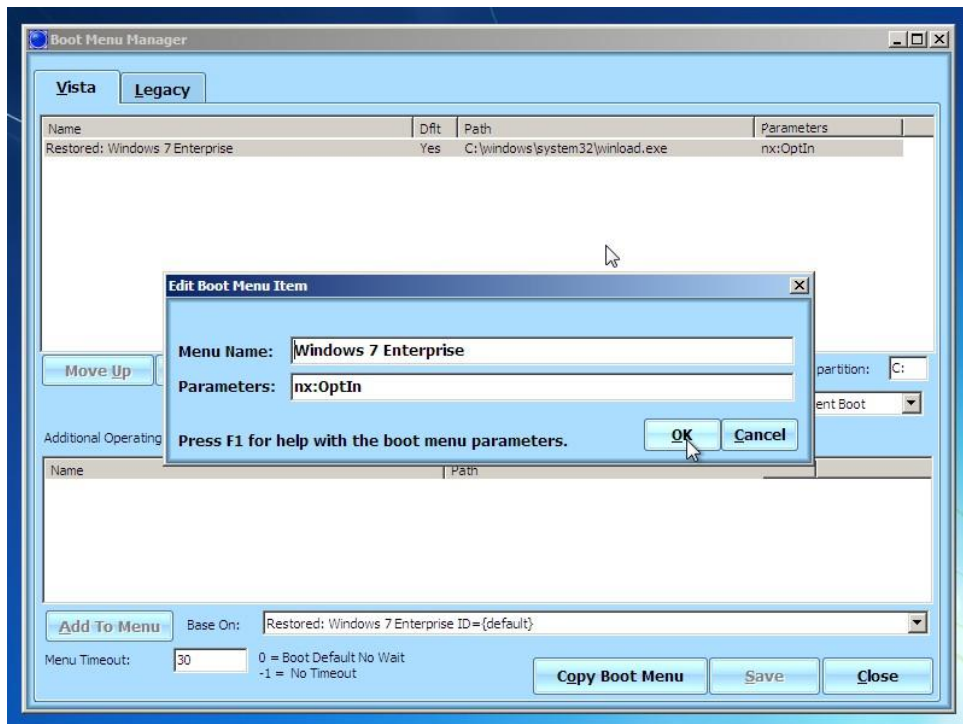
Confirm the restore by clicking **Yes**.



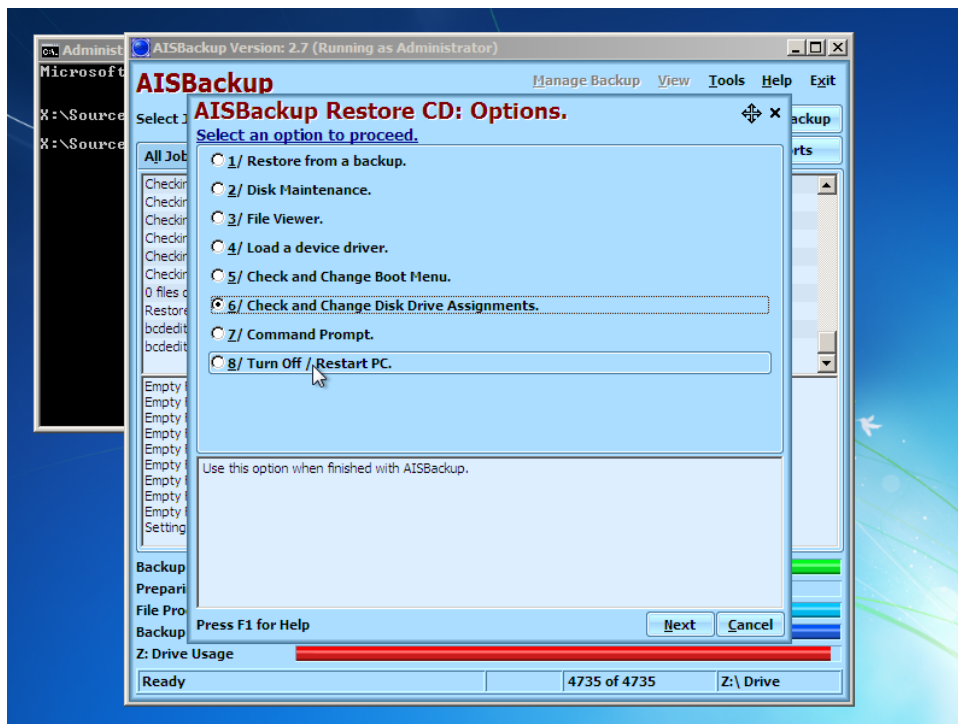
When the restore completes click **OK**.



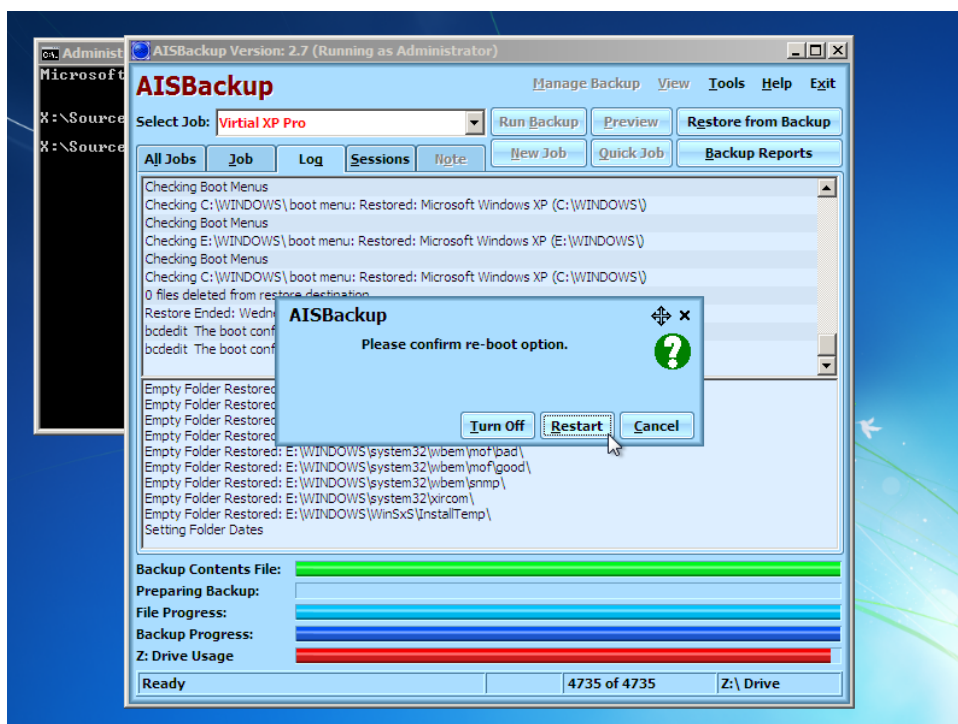
AISBackup restores Windows with a default menu heading, select **Check and Change Boot Menu** to alter the default values.



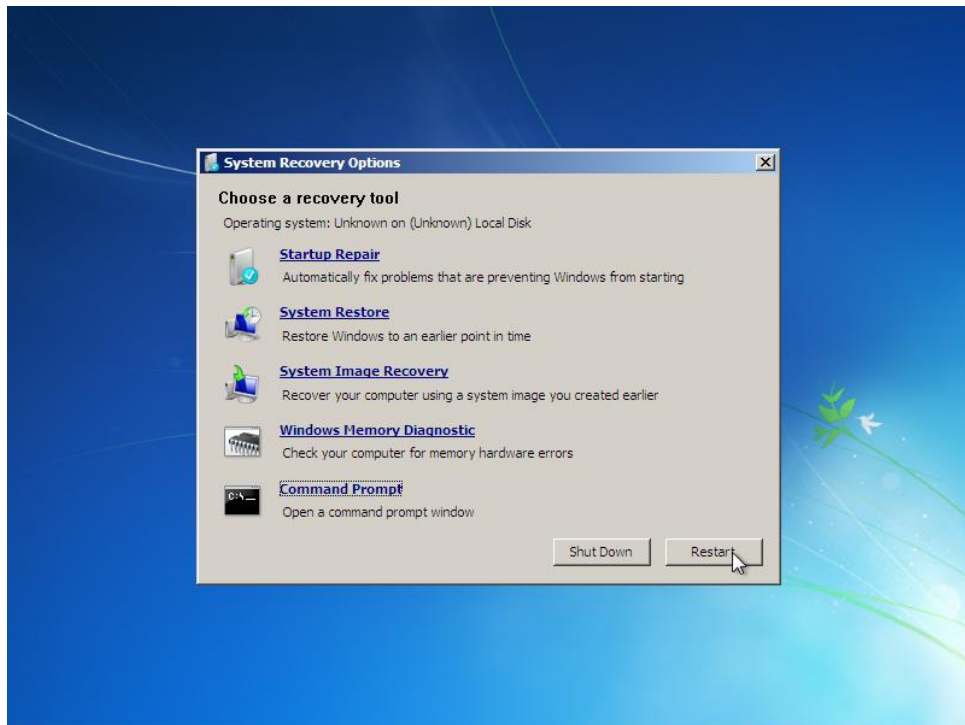
In this example *Restored Windows 7 Enterprise* is changed to *Windows 7 Enterprise*. The menu should then be saved by clicking **Save**, and then the form closed by clicking **Close**.



Click **Turn off / Restart PC** to restart the PC.



Conform by clicking **Restart**.



When booting from the Windows 7 or Vista installation DVD you may also have to click **Restart** on the *System Recovery Options*